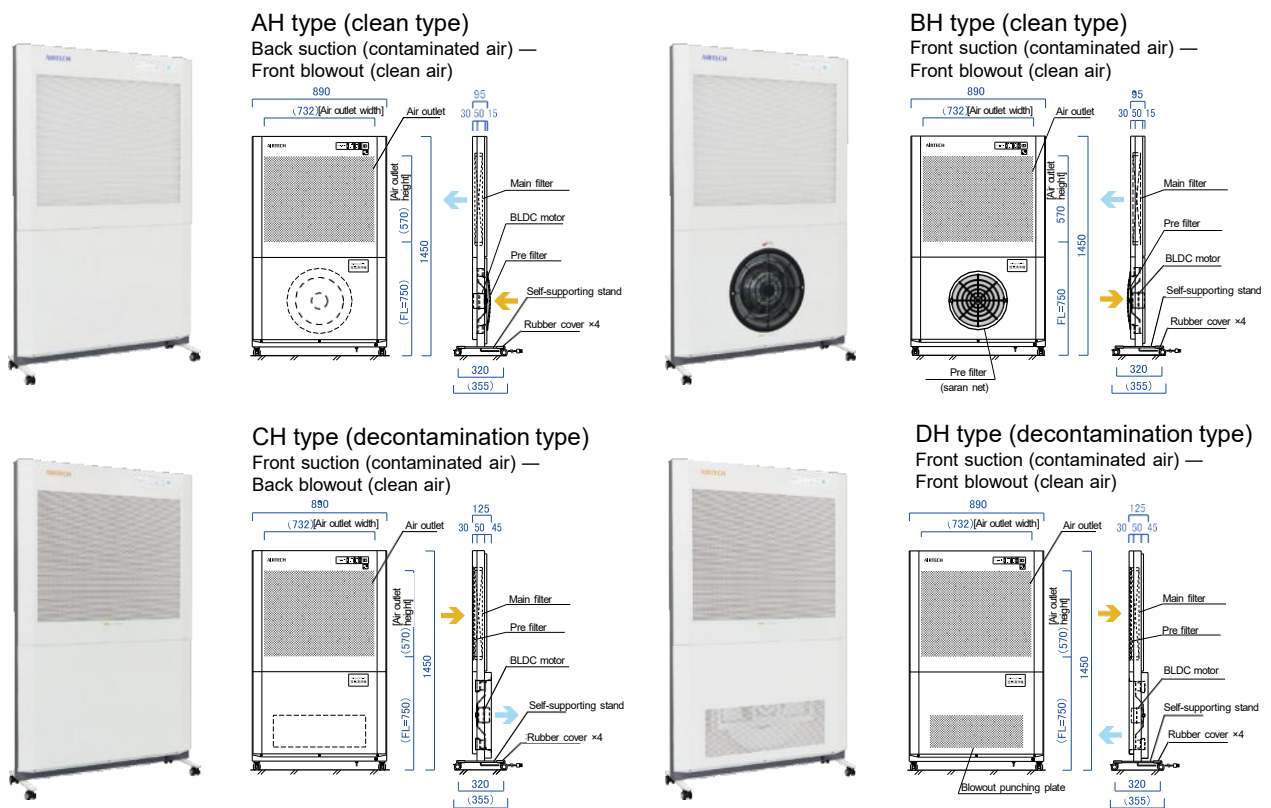


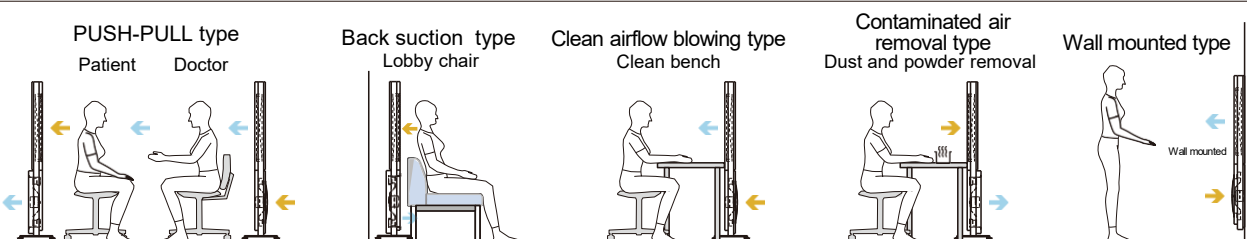
Clean partition [®] ACP-898 type

Thin partition type air purifier for multipurpose.

- Power-saving model that uses a high efficiency brushless DC motor.
 - Possible to select from 4 different types of air flow system to suit your needs.
 - Possible to set air volume in 5 stages from Max mode to Quiet mode.
 - Display light will notify you when the fan is abnormal or need to change the filter.
 - Castors make it easy to move around. (with stopper)
 - Antibacterial specification. (antibacterial coating and antibacterial operation panel)
- * Design registration (No. 1469498, No. 149699, No. 1469862)
* Trademark Registration (No. 6357616)



Application example



Model	ACP-898AH/BH (Clean type)	ACP-898CH/DH (Decontamination type)
Efficiency	99.99% or higher at 0.3µm particles	
Filter element	Main filter: HEPA filter Pre filter: Saran net filter	
Power source	AC100V 1φ 50/60 Hz	
Weight	Approx. 40kg	Approx. 43kg
Structure	Steel plate (baking finish)	

Model	ACP-898AH/BH (Clean type)					ACP-898CH/DH (Decontamination type)				
Air volume mode	MAX	Strong	Weak	Quiet		MAX	Strong	Weak	Quiet	
Air volume (Approx. M ³ /min)	12.5	6.5	5.0	4.0	3.0	11.5	6.5	5.0	4.0	3.0
Blowout air velocity (Approx. m/s)	0.50	0.26	0.20	0.16	0.12	0.46	0.26	0.20	0.16	0.12
Noise (Approx. dBA)	58	45	43	40	36	58	45	43	40	36
Power consumption (Approx. W)	100	30	25	20	15	100	30	25	20	15
Apparent power (Approx. VA)	150	50	40	30	22	150	50	40	30	22

* Measured noise in an anechoic room at 1m from the outlet side and 1m above the floor. Values in the general room are different.

* AH and BH types indicate the blowout air velocity, while CH and DH types indicate the suction air velocity.

Values are calculated from each area and air volume of the blowout and suction.